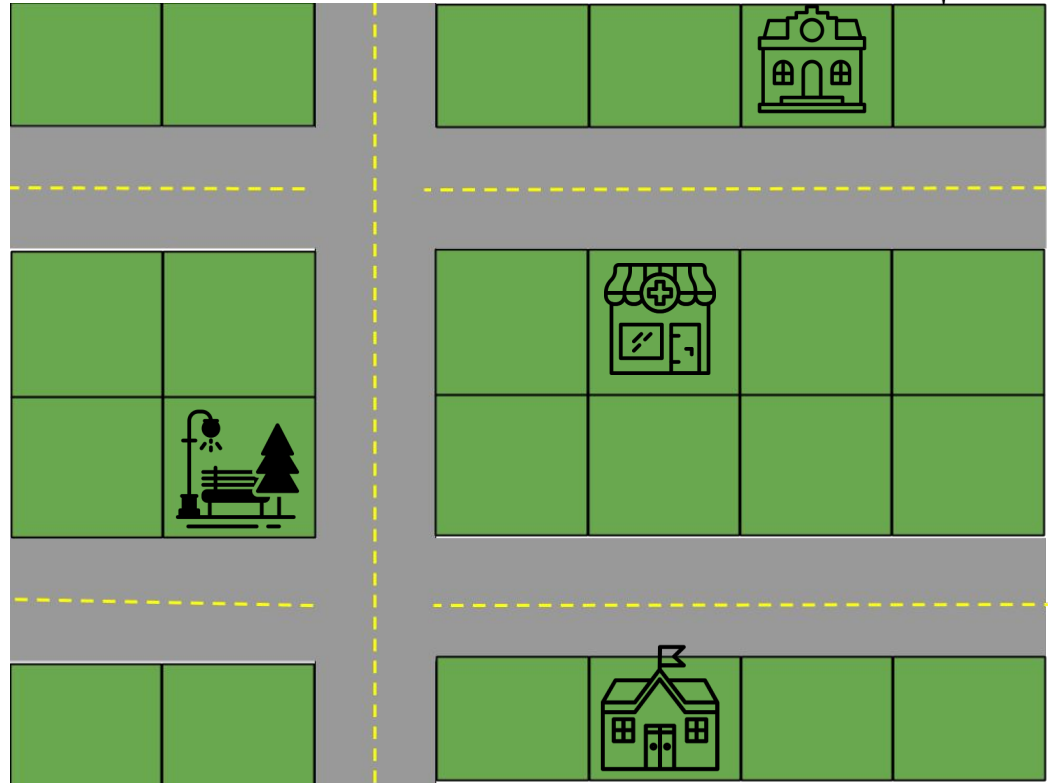


Create a Community Map



Instructions for Using this Slide Deck

This is a View Only copy of this slide deck.

If you have a gmail (and therefore, Google account) you can go to the File menu and choose, Make a Copy.

If you are a teacher in a Google District and use Google Classroom, attach this to your assignment and choose "Make a Copy for Each Student."

If you are a parent helping your child(ren), keep your copy and make an additional copy to share with your child(ren.)

Questions? Write to lbrandon@lhric.org.

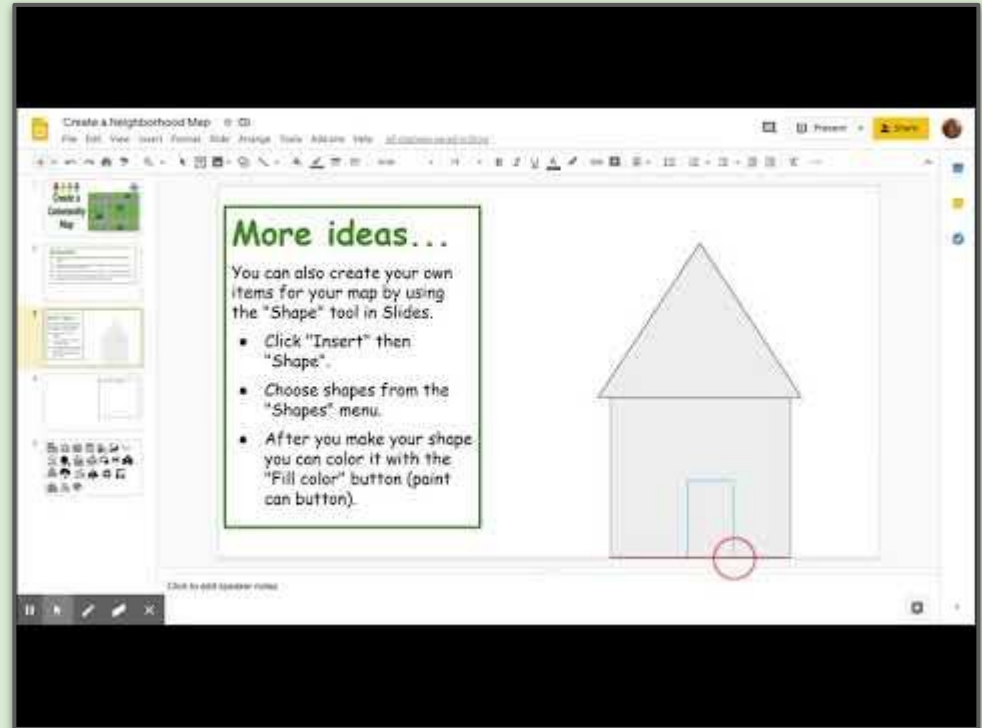
Directions...

- Build your own neighborhood map using the items on [Slide #5](#).
- Copy and paste the pictures onto your map on [Slide #4](#). (You might need a grown-up to show you how.)
- You can resize the pictures and you can move the pictures by dragging them. You can also use the arrow keys to move them (after you click to select).
- Be sure to include some community buildings on your map, such as a fire station, park or school.
- When done creating your map, write about it in the space provided on [Slide #6](#). Follow the instructions at the bottom.

More ideas...

You can also create your own items for your map by using the "Shape" tool in Slides.

- Click "Insert" then "Shape."
- Choose shapes from the "Shapes" menu.
- After you make your shape you can color it with the "Fill color" button (paint can button).
- Watch the video to see how to do this.




Write the name of your community in this box.

--	--

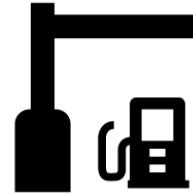
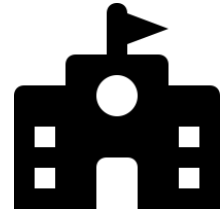
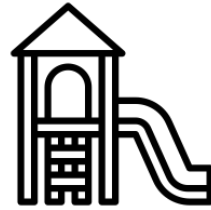
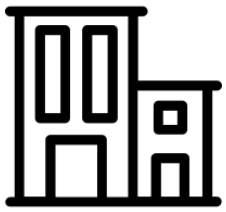
--	--

--	--	--	--

--	--	--	--





Instructions: Copy pictures from this slide onto your map on [Slide #5](#). Click on a picture, go to the Edit Menu and choose Copy, then go to Slide #5 and go to Edit menu and Paste. (there are other ways to copy and paste, too. Ask an adult for help.)

My Community Map

Type your text here.